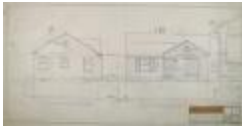




The Adams (322-001-001)



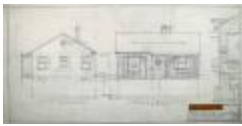
The Alton (322-001-002)



The Ames (322-001-003)



The Anderson (322-001-004)



The Ashton (322-001-005)



The Baldwin (322-001-006)



The Barton (322-001-007)



The Better Homes and Gardens Home (322-001-008_001)



Bustraan Better Homes and Gardens Home (322-001-008_002)



The Better Homes and Gardens Home Reverse (322-001-008_003)



The Better Homes and Gardens House (322-001-008_004)



Better Homes for All America (322-001-009)



The Bolton (322-001-010)



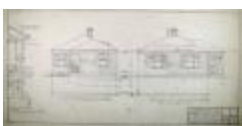
The Booth (322-001-011)



The Boswell Reverse (322-001-012_001)



The Boswell Straight (322-001-012_002)



The Bradley (322-001-013)



The Built-Moor Straight (322-001-014_001)



Contemporary Built-Moor Straight (322-001-014_002)



The Built-Moor "B" Reverse (322-001-014_003)



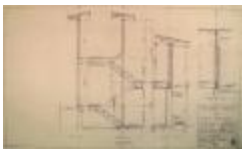
Alternate Elevation Built-Moor "B" Straight (322-001-014_004)



The Built-Moor "B" Straight (322-001-014_005)



The Cape Cod (322-002-001)



The Carl Series (322-002-002)



Bennett Carlee (322-002-003_001)



Bosscher Carlee Straight (322-002-003_002)



Bull-Carlee Straight (322-002-003_003)



Dachoff Carlee Reverse (322-002-003_004)



Flatstone Carlee Straight (322-002-003_005)



Goethel Carlee Reverse (322-002-003_006)



Keenan Carlee Reverse (322-002-004_001)



Kruckle Carlee Straight (322-002-004_002)



Jerow Carlee Straight (322-002-004_003)



Jerow Carlee Reverse (322-002-004_004)



Jerow Carlee Reverse (322-002-004_005)



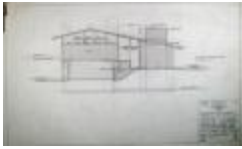
Mckenzie Carlee Reverse (322-002-004_006)



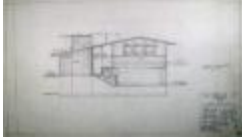
Webster Carlee Straight (322-002-004_007)



Welcomb Carlee Reverse (322-002-004_008)



The Carlee A Reverse (322-002-005_001)



The Carlee B Straight (322-002-005_002)



The Carlee B Reverse (322-002-005_003)



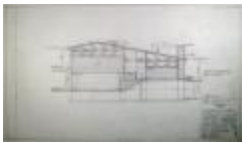
The Carlee B Reverse (322-002-005_004)



The Carlee C Straight (322-002-006_001)



The Carlee C Reverse (322-002-006_002)



The Carlee D Reverse (322-002-006_003)



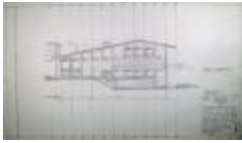
The Carlee E Straight (322-002-007_001)



The Carlee E Reverse (322-002-007_002)



The Carlee F Straight (322-002-007_003)



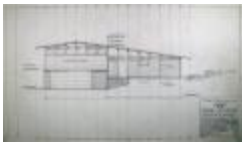
The Carlee G Straight (322-002-008_001)



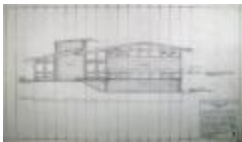
The Carlee H Stright (322-002-008_002)



The Carlee L Reverse (322-002-008_003)



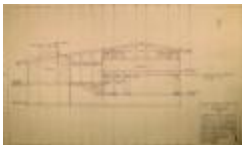
The Carling A Reverse (322-002-009)



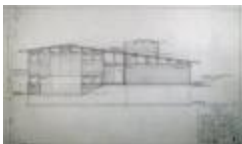
The Brace Carlisle Straight (322-002-010_001)



Reynier Carlisle Straight (322-002-010_002)



The Carlisle A Straight (322-002-010_003)



The Carlisle C Reverse (322-002-010_004)



Bolling Carlisle (322-002-010_005)



Coolidge Carlsburg Reverse (322-003-001_001)



Crowe Carlsburg Reverse (322-003-001_002)



The Ford Carlsburg Straight (322-003-001_003)



The Hurley Carlsburg Reverse (322-003-001_004)



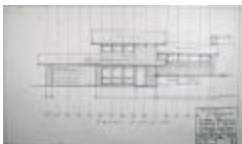
Janes Carlsburg Straight (322-003-002_001)



Jordan Carlsburg Reverse (322-003-002_002)



Lorayn Carlsburg Reverse (322-003-002_003)



Sebulske Carlsburg Reverse (322-003-002_004)



Carlsburg A Reverse (322-003-003_001)



The Carlsburg SW Straight (322-003-003_002)



The Carlsburg C Reverse (322-003-004_001)



The Carlsburg E Reverse (322-003-004_002)



The Carlsburg F Reverse (322-003-005_001)



The Carlsburg G Reverse (322-003-005_002)



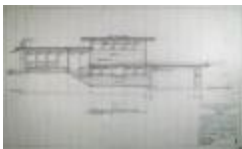
The Carlson C Straight (322-003-006_001)



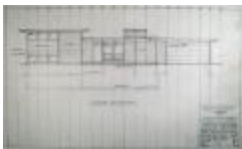
The Carlson C Reverse (322-003-006_002)



Adkins Carlton Reverse (322-003-007_001)



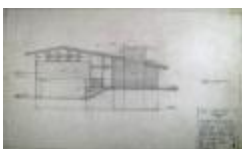
Ellingen Carlton Straight (322-003-007_002)



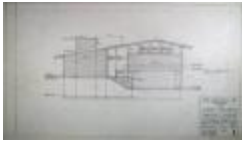
Reed Carlton Reverse (322-003-007_003)



Yalacki Carlton Reverse (322-003-007_004)



The Carlton A Reverse (322-003-008_001)



The Carlton B Straight (322-003-008_002)



The Carlton E Straight (322-003-008_003)



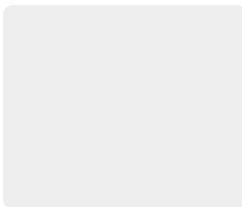
The Carlton E Reverse (322-003-008_004)



The Cedar (322-003-009)



The Continental Straight (322-003-011)



The Coronado (322-003-012)



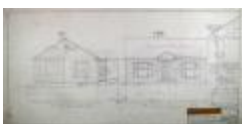
The Roger Corsair (322-003-013_001)



Sodergren Corsair (322-003-013_002)



The Corsair Reverse (322-003-013_003)



The Coulton (322-003-014)



The Decker (322-004-001_001)



The Delaney (322-004-001_002)



The Delaney Reverse (322-004-001_003)



The Denton (322-004-001_004)



The Denton Reverse (322-004-001_005)



The Dixon (322-004-001_006)



The Durant (322-004-001_007)



Eden Reverse (322-004-002)



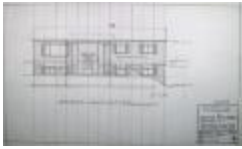
Eastwood (322-004-003_001)



The Eaton (322-004-003_002)



Mansfield Eldorado (322-004-004_001)



Mansfield Eldorado (322-004-004_002)



The Eldorado Straight (322-004-004_003)



The Eldorado II (322-004-004_004)



The Emery (322-004-005_001)



The Eufala Straight (322-004-005_002)



Contemporary Eufala Straight (322-004-005_003)



The Evans (322-004-005_004)



The Ferris (322-004-006_001)



The Fitch (322-004-006_002)



The Ford (322-004-007)



The Franklin (322-004-008)



The Fuller (322-004-009_001)



The Fuller with Brick Front (322-004-009_002)



The Fuller Reversed (322-004-009_003)



Georgian (322-004-010_001)



The DeBlaay Georgian (322-004-010_002)



The Duckworth Georgian (322-004-010_003)



Eastlawn Georgian (322-004-010_004)



Engel Georgian (322-004-010_005)



Ericksen Georgian (322-004-010_006)



The Hart Georgian (322-004-011_001)



Heywood Georgian Contemporary Reverse (322-004-011_002)



The Hubbel Georgian (322-004-011_003)



The Methodist Georgian Reverse (322-004-011_004)



The Oliver Georgian Straight (322-004-011_005)



Peurack Georgian (322-004-011_006)



VanTrump Georgian (322-004-011_007)



Vredevelt Modern Georgian (322-004-011_008)



The Georgian Straight (322-004-012_001)



The Georgian Straight (322-004-012_002)



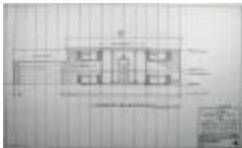
The Georgian Straight (322-004-012_003)



The Georgian Straight Alternate Elevation (322-004-012_004)



The Georgian Straight (322-004-012_005)



The Georgian Straight (322-004-012_006)



The Georgian (322-004-012_007)



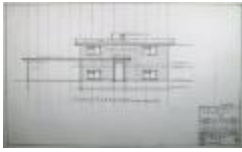
The Georgian Reverse (322-004-013_001)



The Georgian II (322-004-013_002)



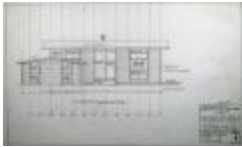
Georgian (322-004-013_003)



The Compact Georgian (322-004-013_004)



The Georgetown (322-004-013_005)



Contemporary Georgian With Garage Straight (322-004-013_006)



Contemporary Georgian (322-004-013_007)



Contemporary Georgian Reverse (322-004-013_008)



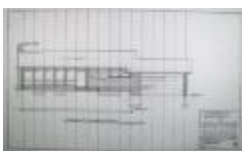
Georgian Garage (322-004-014_001)



Georgian Garage (322-004-014_002)



The Georgetown (322-005-001)



Anderson Goodall (322-005-002_001)



C.A.O. Goodall Reverse (322-005-002_002)



The Gerner Goodall (322-005-002_003)



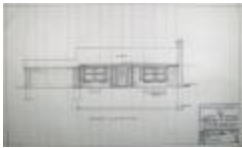
Klett-Goodall Reverse (322-005-002_004)



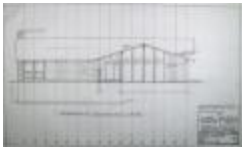
Lampert Goodall Reverse (322-005-002_005)



Lyons Goodall (322-005-003_001)



McIntosh Goodall (322-005-003_002)



Dr. & Mrs. Olson Goodall (322-005-003_003)



The Peterson-Goodall Straight (322-005-003_004)



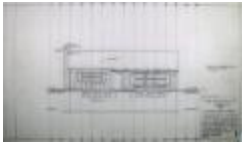
Snyder Goodall Straight (322-005-003_005)



The Goodall A Straight (322-005-004_001)



The Goodall A Reverse (322-005-004_002)



The Goodall B Straight (322-005-004_003)



The Goodall B Reverse (322-005-004_004)



The Goodall A Straight (322-005-004_005)



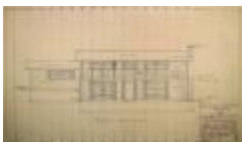
Goodstrom A Reverse (322-005-005)



The Albert Goodwill Straight (322-005-006_001)



Ballard Goodwill Straight (322-005-006_002)



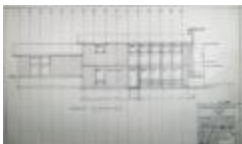
Beardsley Goodwill Reverse (322-005-006_003)



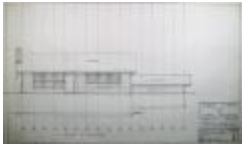
Bishop Goodwill (322-005-006_004)



The Brock Goodwill Straight (322-005-006_005)



Claude Goodwill Reverse (322-005-006_006)



Lubben Goodwill Reverse (322-005-007_001)



Norwalk Goodwill Reverse (322-005-007_002)



P.O.H. Goodwill Reverse (322-005-007_003)



Roach Goodwill Straight (322-005-007_004)



Taylor Goodwill Reverse (322-005-007_005)



Tuttle Goodwill Reverse (322-005-007_006)



Vanderveen Goodwill Reverse (322-005-008_001)



Walker Goodwill Reverse (322-005-008_002)



The Waugh Goodwill Reverse (322-005-008_003)



Zull Goodwill Reverse (322-005-008_004)



The Goodwill A Straight (322-005-009_001)



The Goodwill B Reverse (322-005-009_002)



The Goodwill C Straight (322-005-009_003)



The Modern Gregory (322-006-001_001)



The Middleman Gregory Colonial (322-006-001_002)



The Gregory Colonial (322-006-001_003)



Contemporary Gregory Straight (322-006-001_004)



The Ranch Gregory (322-006-001_005)



The Halsted (322-006-002)



The Harold (322-006-003)



The Hayward House (322-006-004)



The Holton (322-006-005)



The Jose (322-006-006)



The Kendalwood (322-006-007_001)



The Young Kendlewood (322-006-007_002)



The Kindlewood Straight (322-006-007_003)



The Kendlewood Straight (322-006-007_004)



The Kendlewood Straight (322-006-007_005)



The Klein (322-006-008)



The Langley (322-006-009)



The Mark Series (322-006-010)



The Marsh (322-006-011)



The Michigan (322-006-012)



Crum Middleboro Straight (322-006-013_001)



Haig Middleboro (322-006-013_002)



Colonial Middleboro II (322-006-013_003)



Spring Lake Middleboro (322-006-013_004)



Timmerman Middleboro Striaight (322-006-013_005)



The Middleboro-Colonial Straight (322-006-014_001)



The Middleboro Colonial Revised (322-006-014_002)



The Middleboro Colonial Reverse (322-006-014_003)



The Middleboro Colonial Reverse (322-006-014_004)



The Middleboro Modern Reverse (322-006-014_005)



The Contemporary Middleboro Straight (322-006-014_006)



Model Home Number 2 (322-007-001_001)



Model House Number 4 (322-007-001_002)



Model Home Number 5 (322-007-002)



Model Home Number 6 (322-007-003_001)



Model Home Number 7 (322-007-003_002)



Model House Number 11 (322-007-004_001)



Model House Number 12 (322-007-004_002)



Model House Number 13 (322-007-004_003)



Model House Number 15 (322-007-005_001)



Model House Number 17 (322-007-005_002)



The Oakhurst (322-007-006)



The Oakton (322-007-007)



The Regency (322-007-008)



Residence for: ____ (322-007-009)



Residence of 456 College Ave. (322-007-010)



Residence for: Mr. & Mrs. Anema (322-007-011)



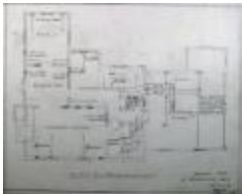
Residence for: Dr. & Mrs. Baum (322-007-012)



Residence for: Mr. & Mrs. Bjork (322-007-013)



**Remodeling Plans for Residence of: Mr. & Mrs. Boersma
(322-007-014)**



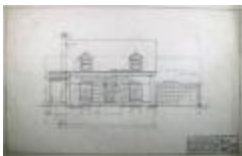
Residence for: M. Broderick (322-007-015)



Residence for: Dr. & Mrs. Burelson (322-007-016)



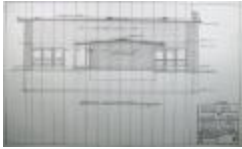
Residence for: Mr. & Mrs. Clark (322-007-017)



Residence for: Mr. & Mrs. Dalstra (322-007-018)



House for Mr. & Mrs. DeBlooy (322-007-019)



House for Mr. & Mrs. Franklin (322-007-020)



Residence for: Mr. & Mrs. Furniss (322-007-021)



Residence for: Mr. & Mrs. Grigware (322-008-001)



Residence for: Mr. & Mrs. Hertel (322-008-002)



House for Dr. & Mrs. Hoek (322-008-003)



Additions to Residence of Mr. & Mrs. Kleimeyer (322-008-004)



Residence for: Mr. & Mrs. Luidens (322-008-005)



Residence for Mr. & Mrs. Martin (322-008-006)



House for Mr. & Mrs. Merkel (322-008-007)



Residence for Miss Powell (322-008-008)



Residence for Mr. & Mrs. Satin (322-008-009)



Residence for: Mr& Mrs. Syrett (322-008-010)



Underwood House (322-008-011)



Residence for: Mr. & Mrs. VanLaar (322-008-012)



Residence for Mr. & Mrs. Wawee (322-008-013)



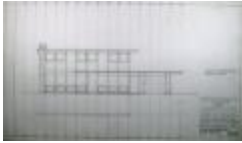
Wepman Residence (322-008-014)



Residence for Mr. Wesorick (322-008-015)



Cabinet Details for Dr. Brown (322-008-016)



Richardson A Reverse (322-008-017)



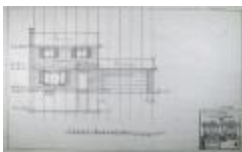
The Rickardo (322-008-018)



The Rothmoor (322-008-019)



The Ryan Tara (322-009-001)



The Taunton (322-009-002)



Nicholas-Tecumseh (322-009-003)



Nicholson Terry (322-009-004)



The Thornton (322-009-005)



Timberlane Provencial Dr. Davidson Spring Lake (322-009-006)



The Tremont-Reverse (322-009-007)



Antrim Trenton (322-009-008)



The Trenton II (322-009-009_001)



The Trenton V (322-009-009_002)



The Troy Center Entrance (322-009-010)



Holt Tudor (322-009-011)



Tudor Straight (322-009-012)



Adamy Tupper (322-010-001_001)



Andover Tupper (322-010-001_002)



Bagley Tupper (322-010-001_003)



Borgerson Tupper (322-010-001_004)



Braudy Tupper (322-010-001_005)



Burns Tupper III (322-010-001_006)



Clapp Tupper (322-010-001_007)



Collins Tupper (322-010-001_008)



Danby Tupper (322-010-002_001)



Day Tupper (322-010-002_002)



Den Braber Tupper (322-010-002_003)



The Ellis Tupper (322-010-002_004)



Faust Tupper (322-010-002_005)



The Forslund Tupper (322-010-002_006)



The Gish Tupper (322-010-002_007)



Grimm Tupper (322-010-002_008)



Hainer Tupper (322-010-003_001)



Untitled drawing (322-010-003_002)



The Harrington Tupper (322-010-003_003)



Hazlett Tupper (322-010-003_004)



Herman Tupper (322-010-003_005)



The Hitchcock Tupper (322-010-003_006)



The Koelzrer Tupper (322-010-003_007)



Tupper (322-010-003_008)



Liever Tupper (322-010-003_009)



Maliszewski (322-010-003_010)



The Old Tupper (322-010-003_011)



The Patty Tupper (322-010-003_012)



Red Staal Tupper (322-010-004_001)



The Remes Tupper (322-010-004_002)



Stevenson-Kalamazoo Tupper (322-010-004_003)



Van Stee Tupper (322-010-004_004)



Webster Tupper (322-010-004_005)



Dr. Wilkinson Tupper (322-010-004_006)



Wisner Tupper (322-010-004_007)



The Zull Tupper (322-010-004_008)



4 Bedroom Tupper B Colonial (322-010-005_001)



Tupper II (322-010-005_002)



Tupper III (322-010-005_003)



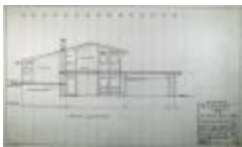
Contemporary Tupper (322-010-005_004)



The Springlake Tupper (322-010-005_005)



The Village Squire (322-010-006)



Villageaire (322-010-007)



The Claver Washington (322-011-001_001)



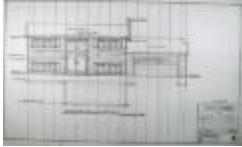
The Dergins Washington (322-011-001_002)



Harty Washington (322-011-001_003)



Kornoelje Res. (322-011-001_004)



The Larson Washington (322-011-001_005)



The Washington Colonial (322-011-002_001)



The Tilleman Washington (322-011-002_002)



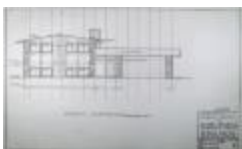
The UHL Washington (322-011-002_003)



Visscher Washington (322-011-002_004)



Winkler Washington (322-011-002_005)



Zull Washington (322-011-002_006)



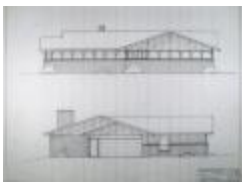
Washington Colonial (322-011-003)



Andover Wellington (322-011-004_001)



Berwick Vault Wellington (322-011-004_002)



Bussell Wellington (322-011-004_003)



Danby Wellington (322-011-004_004)



L. Fiester Wellington (322-011-004_005)



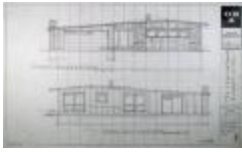
Wellington-American (322-011-004_006)



R.A. Miller Wellington (322-011-004_007)



Stover Wellington (322-011-004_008)



The Wellington II (322-011-005_001)



Sprint Lake Wellington (322-011-005_002)



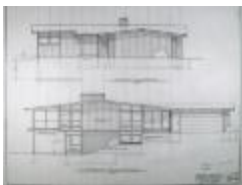
French Provincial Wellington (322-011-005_003)



The Westwood (322-011-006)



The Ernst Winchester (322-011-007)



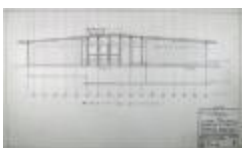
Wood-Warwick (322-011-008)



Clark Woodsman (322-011-009_001)



Claus Woodsman (322-011-009_002)



Ehinges Woodsman (322-011-009_003)



Ehinger Woodsman (322-011-009_004)



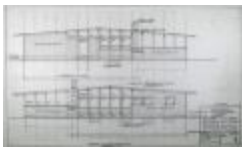
Hornbook Woodsman (322-011-009_005)



Hornbrook Woodsman (322-011-009_006)



McKay Woodsman (322-011-009_007)



The Smith Woodsman (322-011-009_008)



The Timmerman Woodsman (322-011-009_009)



Photo 1 (322-012-001_001)



Photo 2 (322-012-001_002)



Photo 3 (322-012-001_003)



Photo 4 (322-012-001_004)



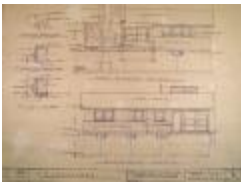
Photo 5 (322-012-001_005)



Untitled drawing (322-012-003_001)



Untitled drawing (322-012-003_002)



Untitled drawing (322-012-003_003)



Untitled drawing (322-012-003_004)



Untitled drawing (322-012-003_005)



Untitled drawing (322-012-003_006)



Untitled drawing (322-012-003_007)



3126 S. Division (322-012-003_008)



3120 S. Division (322-012-003_009)



Sketch No. M. 421 (322-012-004_001)



Sketch No. 733 M. (322-012-004_002)



Sketch No. 734 (322-012-004_003)



Sketch No. M. 738 (322-012-004_004)



Sketch No. 1013 (322-012-004_005)



Photo 1 (322-013-001_001)



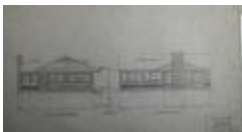
Photo 2 (322-013-001_002)



The Bretton Plan (322-OverA-001_001)



The Breton (322-OverA-001_002)



The Brick Carolina Plan (322-OverA-002_001)



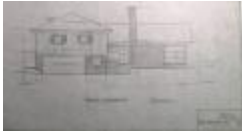
The Brick Carolina Reversed (322-OverA-002_002)



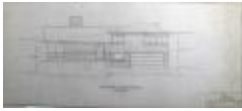
The Compton (322-OverA-003)



The Cruavell (322-OverA-004_001)



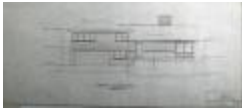
The Cruavell Reversed (322-OverA-004_002)



The Crumwell Alt. (322-OverA-004_003)



The Crumwell Alt Plan (322-OverA-004_004)



The Crumwell Alt Plan Reversed (322-OverA-004_005)



F. Eisenberg Ellsworth (322-OverA-005_001)



Boylan Ellsworth (322-OverA-005_002)



Forbythe Elsworth (322-OverA-005_003)



Small Ellsworth (322-OverA-005_004)



Untitled drawing (322-OverA-005_005)



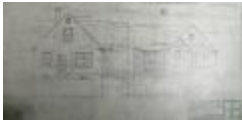
Ellsworth (322-OverA-005_006)



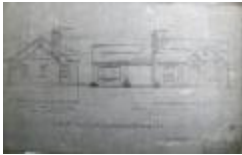
Fairchild Plan with Porch (322-OverA-006_001)



Fairchild #2 (322-OverA-006_002)



The Faye (322-OverA-007_001)



The Faye with Breezeway and Garage (322-OverA-007_002)



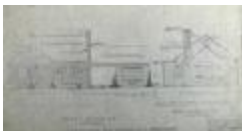
Faye (322-OverA-007_003)



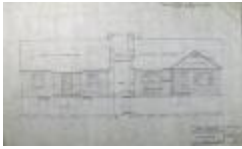
Plan No. 6 with Bay (322-OverA-008_001)



The Fenway with garage (322-OverA-008_002)



The Fenway reversed with breezeway and garage (322-OverA-008_003)



The Flander (322-OverA-009_001)



Flander 2 (322-OverA-009_002)



Flanders No 2 Reversed (322-OverA-009_003)



Fulton (322-OverA-010)



The Hempton #1 (322-OverA-011_001)



The Hempton Reversed #1 (322-OverA-011_002)



The Long Hempton #1 (322-OverA-011_003)



The Long Hempton Reversed #1 (322-OverA-011_004)



The Hempton Plan (322-OverA-011_005)



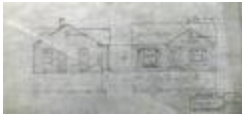
The Ideal House (322-OverA-012_001)



The Ideal House Rev. (322-OverA-012_002)



The Landman (322-OverA-013)



Model House No 100 (322-OverA-014_001)



Model House (322-OverA-014_002)



Model House A (322-OverA-014_003)



Model House FR (322-OverA-014_004)



No. 100 Plan (322-OverA-015_001)



No. 100 Plan Reversed (322-OverA-015_002)



No. 110 Plan (322-OverA-016_001)



No. 110 Plan Reversed (322-OverA-016_002)



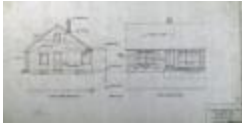
No. 120 Plan (322-OverA-016_003)



No. 130 (322-OverA-016_004)



No. 140 Plan (322-OverA-016_005)



No. 200 Plan (322-OverA-017_001)



No. 200 Plan ABC (322-OverA-017_002)



No. 201 Plan ABC (322-OverA-017_003)



No. 250 Plan (322-OverA-017_004)



No. 202 Plan ABC (322-OverA-017_005)



207-D Reversed (322-OverA-017_006)



No 250 Plan Reversed (322-OverA-017_007)



No 200 Plan (322-OverA-017_008)



No 300 Plan (322-OverA-018_001)



No 300 Plan Reversed (322-OverA-018_002)



No 370 Plan (322-OverA-018_003)



No 370 Plan Reversed (322-OverA-018_004)



No 440 Plan (322-OverA-019_001)



No 450 Plan (322-OverA-019_002)



No 450 Plan Reversed (322-OverA-019_003)



The Montauk (322-OverA-020_001)



Montauk No 2 Plan (322-OverA-020_002)



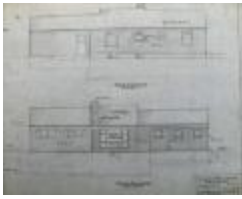
Oakley Reversed (322-OverA-021)



The Rancher (322-OverA-022_001)



The Rancher Plan (322-OverA-022_002)



Long Rancher Reversed (322-OverA-022_003)



Alt Plan for Obryon (322-OverA-023_001)



2 1/2 Bath Randolph #1 (322-OverA-023_002)



2 1/2 Bath Randolph #2 (322-OverA-023_003)



The Randolph No. 3 (322-OverA-023_004)



Blandings Dream House (322-OverB-001_001)



The Blandings Dream House (322-OverB-001_002)



A Residence for Mr. & Mrs. Joseph A. Bussler (322-OverB-002)



Conlon House (322-OverB-003)



Dr. & Mrs. Robert Ludwing Wellington (322-OverB-005)



The "Woodlark" Reversed (322-OverB-006_001)



The "Woodlark" (322-OverB-006_002)



The Woodlawn with Carport (322-OverB-007_001)



The Woodlawn (322-OverB-007_002)



The Woodsman (322-OverB-008_001)



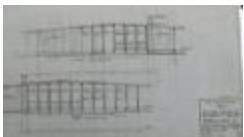
The Woodsman for Rockford Village Builders (322-OverB-008_002)



Woodsman (322-OverB-008_003)



The Woodsman (322-OverB-008_004)



The Woodsman Straight` (322-OverB-008_005)



The Woodsman B Straight (322-OverB-008_006)



The Worthmore No 2 (322-OverB-009_001)



The Worthmore No 4 (322-OverB-009_002)



The Worthmore No 5 (322-OverB-009_003)



The Worthmore No 5 Reversed (322-OverB-009_004)



Alt Front Elevation Long Worthmore No. 5 Plan (322-OverB-009_005)



Long Worthmoor No 5 Rev. (322-OverB-009_006)



Long Worthmoor No 5 Plan With Half-Brick Elevations (322-OverB-009_007)



Alternate Elevations Worthmoor Plan (322-OverB-009_008)



Alternate Elevations Worthmoor Plan (322-OverB-009_009)



Woorthmoor #9 (322-OverB-009_010)



Worthmoor No 10 Plan (322-OverB-009_011)



Worthmoor Plan Reversed with Gable front porch (322-OverB-009_012)



York Reversed with Garage (322-OverB-010_001)



The Yorktown (322-OverB-010_002)



The New Yorktown (322-OverB-010_003)



The New Yorktown Reversed (322-OverB-010_004)



The New Yorktown Reversed Plan With Garage (322-OverB-010_005)



The Worthmoor Reversed (322-OverB-011_001)



Worthmoor with Fireplace (322-OverB-011_002)



Worthmoor with Fireplace (322-OverB-011_003)



The Worthmoor with Fireplace Reversed (322-OverB-011_004)



Worthmoor with Fireplace Reversed with Half Brick Front (322-OverB-011_005)



Long Worthmoor with Garage (322-OverB-011_006)



Four Unit Apartments (322-OverB-012_001)



Apartment Bldg. (Color Drawing) (322-OverB-012_002)



Proposed Apartment Building (322-OverB-012_003)



Proposed Apartment Building College & Cherry (322-OverB-012_004)



Proposed Apartment Building Cherry St. Elevation (322-OverB-012_005)



517 W. Webster St. (322-OverB-012_006)



Remodeling of Apartment Buildings Muskegon, Mi (322-OverB-012_007)



Office Buildings (322-OverB-013_001)



Blackstone Manor (322-OverB-013_002)



Plan "B" Reversed (322-OverB-014)



Plan "5B" Elevation "A" (322-OverB-015_001)



Untitled drawing (322-OverB-015_002)



Practical Building Service (322-OverB-015_003)



Front "B" (322-OverB-015_004)



Untitled drawing (322-OverB-015_005)



Alternate Front Elevation "B" (322-OverB-015_006)



Untitled drawing (322-OverB-015_007)



Untitled drawing (322-OverB-015_008)



Untitled drawing (322-OverB-015_009)



Untitled drawing (322-OverB-015_010)
